



directlift.ca goatlas.ca



APEX
LIFTS



2 Post Lifts

4 Post Lifts

Motorcycle Lifts

ATV Lifts

Jacks



Simply the BEST

directlift.ca • goatlas.ca
800.575.4085

ISN CANADA
Quebec - Ontario - Alberta

 **3 Warehouses**
Shipping Canada Wide





Pro-Park8S

DIRPP8SP300BK

8,000 lbs capacity

INCLUDES:
Casters, Jack Tray, Drip Tray



Model: PP8SPY11

Pro-Park8PL

DIRPP8PLP300BK

8,000 lbs capacity

INCLUDES:
Casters, Jack Tray, Drip Tray



Model: PP8PLPY11

Pro-Park9

DIRPP9PY11BKD

9,000 lbs capacity

INCLUDES:
Casters, Jack Tray, Drip Tray



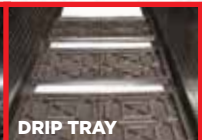
Model: PP9PY11



POLYURETHANE CASTERS



JACK TRAY



DRIP TRAY



JACK

DOUBLE YOUR PARKING INSTANTLY!

No scare tactics or false claims regarding origin, our company size, our knowledge, or our experience. We are simply better in every way. The Direct Lift features and quality is better than our competitors for a much lower price. Our products are manufactured in an ISO9001 certified factory owned by the Dover Corporation - a fortune 500 company.

ProPark8S Specifications

CAPACITY	8,000 lbs.
MAXIMUM LIFT HEIGHT	72" (6')
COLUMN HEIGHT	83" (6' 11")
OVERALL LENGTH (incl. approach ramps)	207 1/2" (17' 3-1/2")
OVERALL WIDTH (add 12" for motor)	103 1/2" (8' 7-1/2")
RUNWAY LENGTH	169" (14' 1")
INSIDE COLUMN	94" (7' 10")
RUNWAY WIDTH	18 1/2"
MOTOR	110v 1hp
SHIPPING WEIGHT	1820 lbs.
MODEL NO.	DIRPP8SP300BK

ProPark8PL Specifications

CAPACITY	8,000 lbs.
MAXIMUM LIFT HEIGHT	86" (7' 2")
COLUMN HEIGHT	95 3/4" (7' 11-3/4")
OVERALL LENGTH (incl. approach ramps)	226" (18' 10")
OVERALL WIDTH (add 12" for motor)	109 1/2" (9' 1-1/2")
RUNWAY LENGTH	184" (15' 4")
INSIDE COLUMN	100" (8' 4")
RUNWAY WIDTH	18 1/2"
MOTOR	110v 1hp
SHIPPING WEIGHT	2020 lbs.
MODEL No.	DIRPP8PLP300BK

ProPark9 Specifications

CAPACITY	9,000 lbs.
MAXIMUM LIFT HEIGHT	84" (7')
COLUMN HEIGHT	97" (8' 1")
OVERALL LENGTH (incl. approach ramps)	225 1/2" (18' 9-1/2")
OVERALL WIDTH (add 12" for motor)	121"
RUNWAY LENGTH	184 1/2" (15' 4-1/2")
INSIDE COLUMN	109 1/2" (9' 1-1/2")
RUNWAY WIDTH	21 1/2"
MOTOR	110v 1hp
SHIPPING WEIGHT	2350 lbs.
MODEL NO.	DIRPP9PY11BKD

APEX LIFTS

NOT ALL LIFTS ARE THE SAME!

It takes a combination of the right design, engineering excellence and quality manufacturing to earn this certification. Look for the "Gold ALI/ETL Label" – your extra assurance that our lifts meet the highest industry safety and performance standards.



APEX 8 **8,000 lbs capacity**

ATEATTD-APEX8



Apex 8 Specifications

CAPACITY	8,000 lb.
LIFTING HEIGHT TO TOP OF RUNWAY	72" (6')
COLUMN HEIGHT	87 1/2" (7' 3 1/2")
OVERALL WIDTH (With Motor)	114 1/2" (9' 6 1/2")
OVERALL LENGTH (without Approach Ramps)	186 1/2" (15' 6 1/2")
OVERALL LENGTH (with Approach Ramps)	219 1/2" (18' 3 1/2")
RUNWAY WIDTH	18 3/4"
RUNWAY LENGTH	165 1/2" (13' 9 1/2")
MOTOR/ELECTRICAL REQUIREMENT	110 Volt, Single (1)
SHIPPING WEIGHT	2,000 lb.

APEX 8EXT **8,000 lbs capacity**

ATEATTD-APEX8-EXT



Apex 8EXT Specifications

CAPACITY	8,000 lb.
LIFTING HEIGHT TO TOP OF RUNWAY	92.28"
COLUMN HEIGHT	99.21"
OVERALL WIDTH (With Motor)	114.72"
OVERALL LENGTH (without Approach Ramps)	175"
OVERALL LENGTH (with Approach Ramps)	208.03"
RUNWAY WIDTH	21.26"
RUNWAY LENGTH	165.35"
MOTOR/ELECTRICAL REQUIREMENT	110 Volt, Single (1)
SHIPPING WEIGHT	1,984 lb.

APEX 8EXT-L **8,000 lbs capacity**

ATEATTD-APEX8-EXT-L



Apex 9 Specifications

CAPACITY	8,000 lb.
LIFTING HEIGHT TO TOP OF RUNWAY	84.61"
COLUMN HEIGHT	99.21"
OVERALL WIDTH (With Motor)	112.83"
OVERALL LENGTH (without Approach Ramps)	189.96"
OVERALL LENGTH (with Approach Ramps)	222.83"
RUNWAY WIDTH	21.26"
RUNWAY LENGTH	180.32"
MOTOR/ELECTRICAL REQUIREMENT	110 Volt, Single (1)
SHIPPING WEIGHT	2,030 lb.

APEX 9 **9,000 lbs capacity**

ATEATTD-APEX9



Apex 9 Specifications

CAPACITY	9,000 lb.
LIFTING HEIGHT TO TOP OF RUNWAY	80 7/8" (6' 8 7/8")
COLUMN HEIGHT	103 1/4" (8' 7 1/4")
OVERALL WIDTH (With Motor)	133 7/8" (11' 1 7/8")
OVERALL LENGTH (without Approach Ramps)	204 1/8" (17' 1/8")
OVERALL LENGTH (with Approach Ramps)	243" (20' 3")
RUNWAY WIDTH	20 1/8"
RUNWAY LENGTH	188 1/2" (15' 8 1/2")
MOTOR/ELECTRICAL REQUIREMENT	110 Volt, Single (1)
SHIPPING WEIGHT	2,975 lb.

INCLUDED



POLYURETHANE CASTERS

JACK TRAY

DRIP TRAY



JACK

OPTIONAL

HOBBYIST 4-POST LIFTS

ATLAS Auto Equipment of Canada stocks a wide selection of the 4 Post Lift for those homeowners who want a portable four post car lift for their home. Portable car lifts are available in 7,000 lbs., 8,000 lbs. and 9,000 lbs. capacities. These models included drip trays, jack tray and a caster kit. The Atlas® Brand is recognized as an Industry leader in Auto-motive Equipment. All Atlas® Car Lifts are engineered and manufactured to deliver years of reliable service. Please feel free to call the professionals at Greg Smith Equipment Sales with any questions you may have. All of our 4-Post Hobby-ist Lifts come with Caster Kit, Drip Trays, and a Jack Tray. Power Requirements: 110v and dedicated 20 amp Breaker.



	PRO8000 ATEXH-PRO8000	PRO8000EXT ATEXH-PRO8000-EXT	PRO8000EXT-L ATEXH-PRO8000-EXT-L	PRO9000 ATEXH-PRO9000	PRO7000ST Super Tall ATEXH-PRO7000ST
Capacity	8,000 LB.	8,000 LB.	8,000 LB.	9,000 LB.	7,000 LB.
Lifting Height	72" (6')	84 1/4" (7' 1/4")	84 1/2" (7' 1/2")	85" (7' 1")	147" (12' 3")
Overall Width of Columns	114" (9' 6")	114" (9' 6")	116 1/2" (9' 8 1/2")	131 1/2" (10' 11 1/2")	123" (10' 3")
Overall Length	207 1/2" (17' 3 1/2")	207 1/2" (17' 3 1/2")	227" (18' 11")	227 1/2" (18' 11 1/2")	227 1/2" (18' 11 1/2")
Runway Length	165 1/2" (13' 9 1/2")	165 1/2" (13' 9 1/2")	185" (15' 5")	199 1/2" (16' 7 1/2")	194" (16' 2")
Clearance Under Runways	67 1/2" (5' 7 1/2")	79" (6' 7")	80" (6' 8")	80 1/2" (6' 8 1/2")	142" (11' 10")
Clearance Between Columns	94 1/2" (7' 10 1/2")	94 3/8" (7' 10 3/8")	98" (8' 2")	110 1/2" (9' 2 1/2")	100" (8' 4")
Height of Columns	83" (6' 11")	98 1/2" (8' 2 1/2")	97 1/2" (8' 1 1/2")	95 3/4" (7' 11 3/4")	162" (13' 6")
Maximum Wheel Base	153 1/2" (12' 9 1/2")	153 1/2" (12' 9 1/2")	173" (14' 5")	187" (15' 7")	182" (15' 2")
Drive Thru	80 1/2" (6' 8 1/2")	80 1/2" (6' 8 1/2")	84" (7')	97 1/4" (8' 1 1/4")	82 1/2" (6' 10 1/2")



CENTRE JACK
4,500 LB. OR 3,500 LB.
CAPACITY

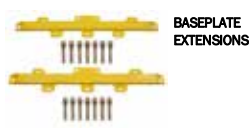


HOBBYIST TWO-POST LIFTS

The 2 Post Car Lift is a primary necessity for a hobbyist and vehicle service industry. Inspecting the underside of a vehicle is a lot easier while standing under the car instead of looking up while lying on a creeper. Greg Smith Equip-ment Sales provides the highest quality Overhead and Base Plate 2 Post Auto Lifts, at the most competitive prices in the Industry. Power Requirements: 220v and dedicated 30 amp Breaker.



	9KOHX	90HSC-SS	OH10000X	BP8000	9KBPX	BP10000X
Capacity	9,000 LBS.	9,000 LBS.	10,000 LB.	8,000 LB.	9,000 LB.	10,000 LB.
Arm Capacity	2,250 LBS. Per Arm	2,250 LBS. Per Arm	2,500 LBS. Per Arm	2,000 LB. Per Arm	2,250 LB. Per Arm	2,500 LB. Per Arm
Overall Height	142" (11' 10") 138" (11' 6")	142" (11' 10")	151 1/2" (12' 7 1/2")	81 3/8" (6' 9 3/8")	74 1/2" (6' 2 1/2")	86 3/8" (7' 2 3/8")
Overall Width	134 1/4" (11' 2 1/4")	133 1/2" (11' 1 1/2")	144" (12')	132" (11')	134 1/2" (11' 2 1/2")	139 1/8" (11' 7 1/8")
Maximum Lift Height	80 1/4" (6' 8 1/4")	81 3/8" (6' 9 3/8")	84" (7')	81 3/8" (6' 9 3/8")	74 1/2" (6' 2 1/2")	86 3/8" (7' 2 3/8")
Cylinder Configuration	Chain Over Roller	Chain Over Roller	Direct Drive	Chain-Over-Roller	Chain-Over-Roller	Chain-Over-Roller
Lock Release	Dual Point	Single Point	Single Point	Single-Point	Dual-Point	Single-Point
Between Columns	109 3/4" (9' 1 3/4")	109 1/2" (9' 1 1/2")	117 1/2" (9' 9 1/2")	109 5/8" (9' 1 5/8")	110" (9' 2")	112 1/4" (9' 4 1/4")
Drive Thru	92 1/2" (7' 8 1/2")	100 3/4" (8' 4 3/4")	106 1/8" (8'10 1/8")	99" (8' 3")	101" (8' 5")	103 1/4" (8' 7 1/4")
Column Thickness of Steel	5mm	5mm	5mm	6mm	5mm	6mm
Minimum Arm Height	4"	4 1/4"	4"	3 1/2"	4"	4 1/2"
Truck Adapters	8 Piece Set (2 Per Arm)	12 Piece Set (3 Per Arm)	12 Piece Set (3 Per Arm)	12 Pc. Set (3 Per Arm)	8 Pc. Set (2 Per Arm)	12 Pc. Set (3 Per Arm)
Warranty	2 yr. Structural, 1 yr. Hyd.	5 yr. Structural, 1 yr. Hyd.	5 yr. Structural, 2 yr. Hyd.	5 yr. Structural, 2 yr. Hyd.	2 yr. Structural, 1 yr. Hyd.	5 yr. Structural, 2 yr. Hyd.



SPECIALTY LIFTS

Direct-Lift™



HR8000

DIRHR8000

CAPACITY 8,000 lbs.
 MAXIMUM LIFT HEIGHT 79" (6' 7")
 COLUMN HEIGHT 111" (9' 3")
 OVERALL WIDTH (ADD 12" FOR MOTOR) 135" (11' 3")
 INSIDE COLUMN 111" (9' 3")
 MOTOR 2hp, 220 Volt, 1 ph
 SHIPPING WEIGHT 1,450 lbs.



DL9

DIRDL9V100BBL

CAPACITY 9,000 lbs.
 MAXIMUM LIFT HEIGHT 76" (6' 4")
 OVERALL HEIGHT 143 3/8" (11' 11-3/8")
 OVERALL WIDTH (ADD 12" FOR MOTOR) 131" (10' 11")
 INSIDE COLUMN 109" (9' 1")
 MOTOR 2hp, 220 Volt, 1 ph
 SHIPPING WEIGHT 1,450 lbs.

Pro9F

DIRPRO9F

CAPACITY 9,000 lbs.
 OVERALL HEIGHT 111"
 LIFTING TIME 45 Seconds
 INSIDE COLUMN 111"
 MAXIMUM LIFT HEIGHT 81"
 OVERALL FLOOR WIDTH 138.5"
 MOTOR 2HP, 220 volt, 1 ph
 DRIVE THRU 97"
 COLUMN SIZE 14.25" X 7.5"
 BASE PLATE WIDTH 16"
 BASE OF LIFT 20.5" X 17.5"
 MINIMUM PAD HEIGHT 4.5"
 SHIPPING WEIGHT 1,730 LBS



MR6

DIRPMR6PY21BKD

CAPACITY 6,000 lbs.
 MAXIMUM LIFT HEIGHT 52" (4' 4")
 MINIMUM HEIGHT 5"
 OVERALL WIDTH 41"
 LENGTH 83"
 MOTOR 110v 1hp
 SHIPPING WEIGHT 975 lbs.



Pro-Cycle*

DIRAL1BKD

CAPACITY 1,000 lbs.
 AIR REQUIREMENTS 90-100 PSI
 OVERALL WIDTH 24"
 LENGTH W/ RAMP 113"
 LENGTH W/O RAMP 93"
 REMOVEABLE
 APPROACH RAMP 20"
 FULL RISE 33"
 FULLY LOWERED 7-1/4"
 SHIPPING WEIGHT 450 lbs.
 *Optional XLT Kit available



Pro-Cycle DT

DIRALG1BKD

CAPACITY 1,000 lbs.
 MAXIMUM LIFT HEIGHT 33" (2' 9")
 AIR REQUIREMENTS 90-100 PSI
 OVERALL WIDTH 24"
 LENGTH WITH RAMP 113" (9' 5")
 REMOVEABLE
 APPROACH RAMP 20"
 SHIPPING WEIGHT 450 lbs.



Rotisserie

DIRROTISSERIE

CAPACITY 3,000 lbs.
 WIDTH (MOUNTING BRACKETS) 13 1/4" - 53 1/4"
 WIDTH CAPACITY 85"
 WORKING HEIGHT 18" - 48"
 WORKING LENGTH to 19"
 CONSTRUCTION 3" X 3" Square Tube
 SHIPPING WEIGHT 640 lbs.



Pro-Cycle DT XLT

DIRALG1BKD+DIRXLTBKD

CAPACITY 1,000 lbs.
 MAXIMUM LIFT HEIGHT 33" (2' 9")
 AIR REQUIREMENTS 90-100 PSI
 OVERALL WIDTH 48"
 LENGTH WITH RAMP 113" (9' 5")
 REMOVEABLE
 APPROACH RAMP 20"
 SHIPPING WEIGHT 700 lbs.

Simply the BEST

Direct-Lift

APEX
LIFTS

We are proud to announce that our Pro Park series four-post lifts are now ALI Certified, and have received ALI/ETL approval.

NOT ALL LIFTS ARE THE SAME!

It takes a combination of the right design, engineering excellence and quality manufacturing to earn this certification. Look for the **"Gold ALI/ETL Label"** - your extra assurance that our lifts meet the highest industry safety and performance standards.



Pro-Park8S

Canada's #1 Automotive Equipment Provider



APEX
LIFTS



directlift.ca • goatlas.ca
800.575.4085


ISN CANADA
Quebec - Ontario - Alberta
3 Warehouses
Shipping Canada Wide

